

San Diego International Airport

Lindbergh Field

Air Traffic Report

April

2011



Air Service Development Department
San Diego County Regional Airport Authority
Post Office Box 82776
San Diego, CA 92138-2776
(619) 400-2875

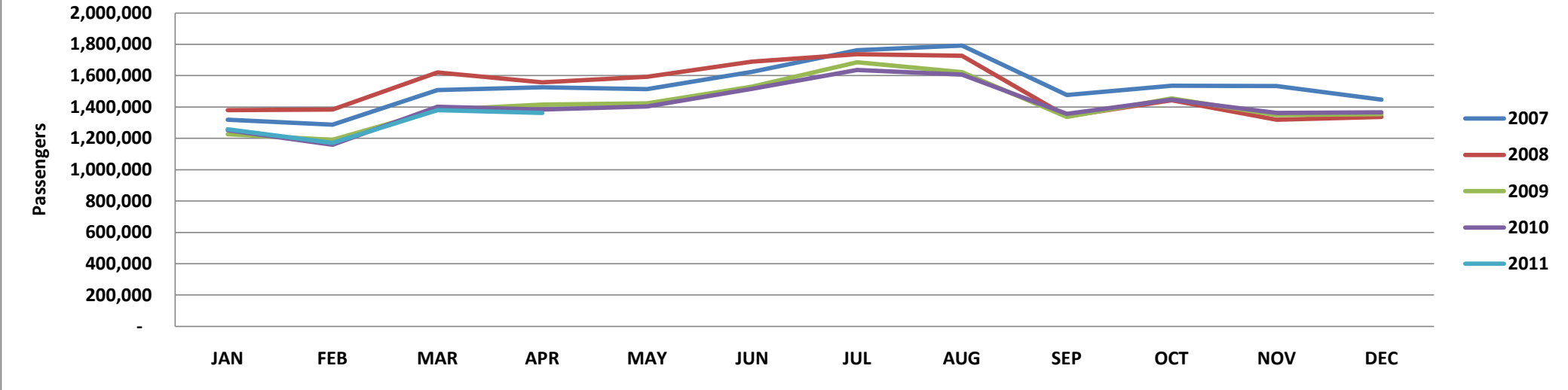
Summary Data

	April				Calendar Year-to-Date			
	2011	2010	Change	% Change	2011	2010	Change	% Change
<u>Domestic Passengers</u>								
Enplaned Passengers	678,821	687,038	(8,217)	-1.2%	2,535,211	2,553,854	(18,643)	-0.7%
Deplaned Passengers	<u>661,023</u>	<u>673,984</u>	<u>(12,961)</u>	<u>-1.9%</u>	<u>2,550,309</u>	<u>2,558,919</u>	<u>(8,610)</u>	<u>-0.3%</u>
Total	1,339,844	1,361,022	(21,178)	-1.6%	5,085,520	5,112,773	(27,253)	-0.5%
<u>International Passengers</u>								
Enplaned Passengers	10,420	11,150	(730)	-6.5%	39,436	40,536	(1,100)	-2.7%
Deplaned Passengers	<u>11,294</u>	<u>11,302</u>	<u>(8)</u>	<u>-0.1%</u>	<u>45,120</u>	<u>42,393</u>	<u>2,727</u>	<u>6.4%</u>
Total	21,714	22,452	(738)	-3.3%	84,556	82,929	1,627	2.0%
<u>Total Passengers</u>								
Enplaned Passengers	689,241	698,188	(8,947)	-1.3%	2,574,647	2,594,390	(19,743)	-0.8%
Deplaned Passengers	<u>672,317</u>	<u>685,286</u>	<u>(12,969)</u>	<u>-1.9%</u>	<u>2,595,429</u>	<u>2,601,312</u>	<u>(5,883)</u>	<u>-0.2%</u>
Total	1,361,558	1,383,474	(21,916)	-1.6%	5,170,076	5,195,702	(25,626)	-0.5%
<u>Domestic Air Cargo Tons</u>								
Enplaned Cargo Tons	4,611.7	4,674.9	(63.2)	-1.4%	18,428.2	17,965.2	463.1	2.6%
Deplaned Cargo Tons	<u>4,576.2</u>	<u>4,609.3</u>	<u>(33.0)</u>	<u>-0.7%</u>	<u>18,638.6</u>	<u>17,579.3</u>	<u>1,059.3</u>	<u>6.0%</u>
Total	9,188.0	9,284.2	(96.2)	-1.0%	37,066.9	35,544.5	1,522.4	4.3%
<u>International Cargo Tons</u>								
Enplaned Cargo Tons	5.5	2.1	3.4	161.4%	23.3	16.0	7.3	45.6%
Deplaned Cargo Tons	<u>0.2</u>	<u>-</u>	<u>0.2</u>	<u>100.0%</u>	<u>4.3</u>	<u>1.2</u>	<u>3.1</u>	<u>254.2%</u>
Total	5.6	2.1	3.5	168.6%	27.6	17.2	10.4	60.2%
<u>Total Cargo Tons</u>								
Enplaned Cargo Tons	4,617.2	4,677.0	(59.8)	-1.3%	18,451.5	17,981.2	470.4	2.6%
Deplaned Cargo Tons	<u>4,576.4</u>	<u>4,609.3</u>	<u>(32.9)</u>	<u>-0.7%</u>	<u>18,642.9</u>	<u>17,580.5</u>	<u>1,062.4</u>	<u>6.0%</u>
Total	9,193.6	9,286.3	(92.7)	-1.0%	37,094.4	35,561.7	1,532.8	4.3%
<u>US Mail Tons</u>								
Enplaned US Mail Tons	1,026.0	964.6	61.4	6.4%	4,162.4	4,219.4	(57)	-1.4%
Deplaned US Mail Tons	<u>318.1</u>	<u>310.6</u>	<u>7.5</u>	<u>2.4%</u>	<u>1,344.3</u>	<u>1,211.3</u>	<u>133</u>	<u>11.0%</u>
Total	1,344.1	1,275.2	68.9	5.4%	5,506.7	5,430.7	76	1.4%
<u>FAA Air Traffic Activity*</u>								
Air Carrier	11,653	12,112	(459)	-3.8%	46,321	46,970	(649)	-1.4%
Air Taxi	2,321	2,641	(320)	-12.1%	9,228	10,081	(853)	-8.5%
General Aviation	803	916	(113)	-12.3%	3,379	3,536	(157)	-4.4%
Military	<u>62</u>	<u>99</u>	<u>(37)</u>	<u>-37.4%</u>	<u>251</u>	<u>384</u>	<u>(133)</u>	<u>-34.6%</u>
Total	14,839	15,768	(929)	-5.9%	59,179	60,971	(1,792)	-2.9%
* FAA Aircraft Activity includes "Itinerant Operations" at the airport and will differ from other operational data reported by the airlines. Source: http://aspm.faa.gov/opsnet/sys/Airport.asp								

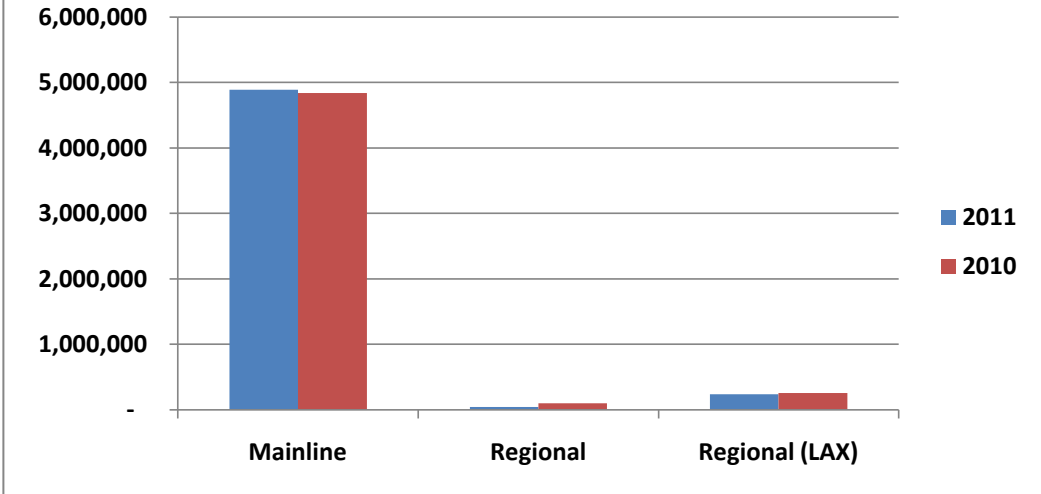
Detailed Passenger Summary

	April				Calendar Year-to-Date			
	2011	2010	% Change	% Share	2011	2010	% Change	% Share
<u>Passengers by Type of Carrier*</u>								
Mainline	1,273,609	1,281,629	-0.6%	93.5%	4,838,579	4,773,048	1.4%	93.6%
Mainline (International)	13,331	18,196	-26.7%	1.0%	51,877	66,211	-21.6%	1.0%
Regional	14,120	14,660	-3.7%	1.0%	43,458	101,277	-57.1%	0.8%
Regional (International)	-	-	0.0%	0.0%	-	-	0.0%	0.0%
Regional (LAX)	60,498	68,989	-12.3%	4.4%	236,162	255,166	-7.4%	4.6%
Total	1,361,558	1,383,474	-1.6%	100.0%	5,170,076	5,195,702	-0.5%	100.0%
<u>Passengers by Terminal Area</u>								
Commuter Terminal	60,498	68,989	-12.3%	4.4%	236,162	255,166	-7.4%	4.6%
Terminal 1 East	541,428	540,486	0.2%	39.8%	2,071,398	2,023,146	2.4%	40.1%
Terminal 1 West	227,303	239,361	-5.0%	16.7%	881,104	912,804	-3.5%	17.0%
Terminal 2 (FIS)	4,263	8,328	-48.8%	0.3%	17,062	26,942	-36.7%	0.3%
Terminal 2 East	216,997	192,221	12.9%	15.9%	815,952	724,616	12.6%	15.8%
Terminal 2 West	311,069	334,089	-6.9%	22.8%	1,148,398	1,253,028	-8.4%	22.2%
Total	1,361,558	1,383,474	-1.6%	100.0%	5,170,076	5,195,702	-0.5%	100.0%
<u>Gate Utilization Rate (Passengers)</u>								
Commuter Terminal	15,125	17,247	-12.3%		59,041	63,792	-7.4%	
Terminal 1 East	49,221	49,135	0.2%		188,309	183,922	2.4%	
Terminal 1 West	28,413	29,920	-5.0%		110,138	114,101	-3.5%	
Terminal 2 (FIS)	1,421	2,776	-48.8%		5,687	8,981	-36.7%	
Terminal 2 East	21,700	19,222	12.9%		81,595	72,462	12.6%	
Terminal 2 West	34,563	37,121	-6.9%		127,600	139,225	-8.4%	
Net Gate Utilization Rate	30,257	30,744	-1.6%		114,891	115,460	-0.5%	
<u>Passengers versus Capacity</u>								
Passengers per Departure	105.6	101.7	3.8%		101.1	98.9	2.2%	
Estimated Seats per Departure**	130.4	128.0	1.8%		130.0	128.1	1.5%	
Estimated Load Factor	81.0%	79.4%	1.9%		77.8%	77.2%	0.7%	
* As reported by the Carriers.								
** Source: APGDat - Airline Planning Data.								

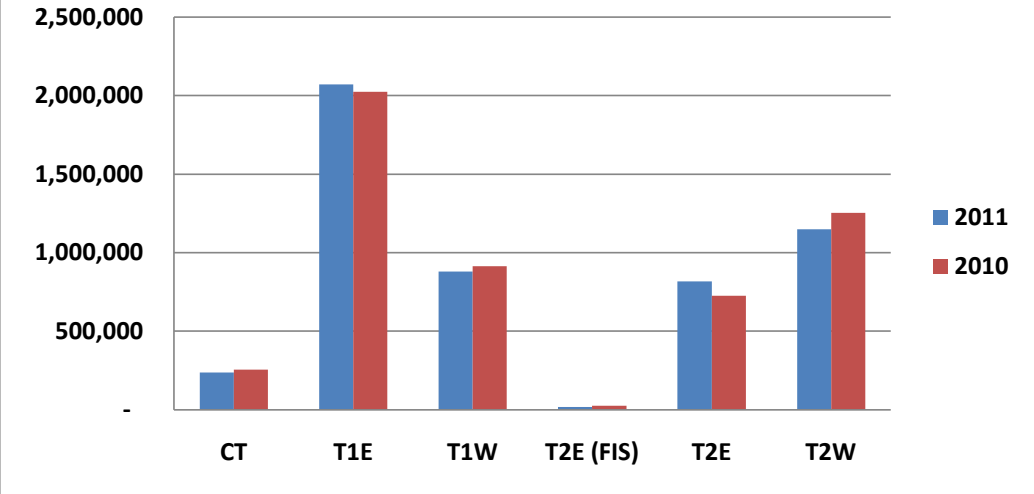
Monthly Passenger Trend - 2007 through 2011



Passengers by Type of Carrier (2009 v 2010)



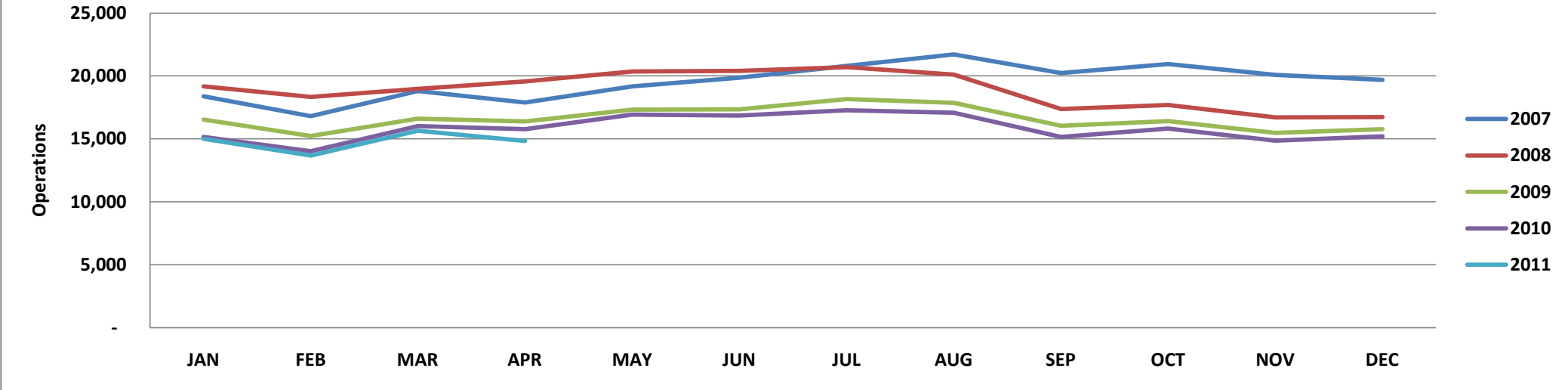
Passengers by Terminal Area (2009 v 2010)



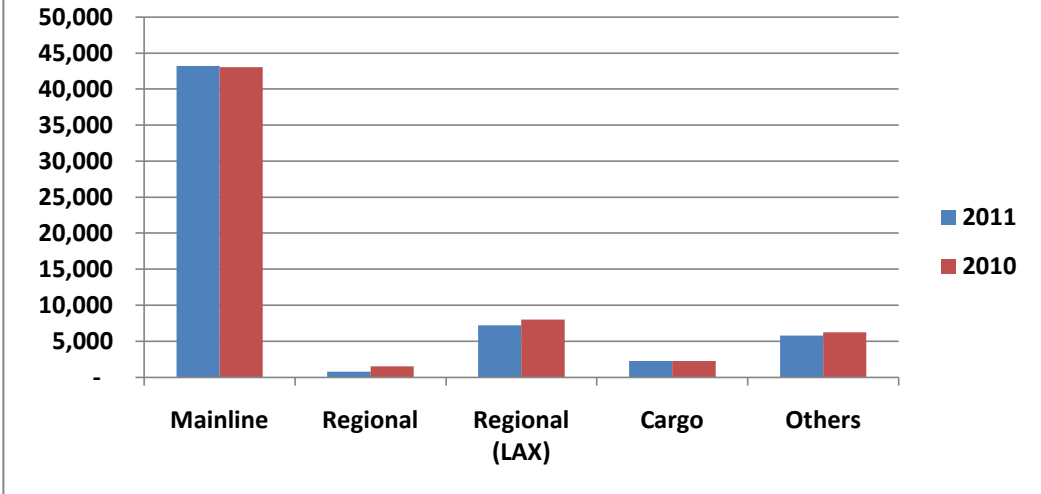
Detailed Operations Summary

	April				Calendar Year-to-Date			
	2011	2010	% Change	% Share	2011	2010	Change	% Share
<u>Operations by Type of Carrier*</u>								
Mainline	10,776	11,054	-2.5%	72.6%	42,627	42,239	0.9%	72.0%
Mainline (International)	146	206	-29.1%	1.0%	576	794	-27.5%	1.0%
Regional	262	202	29.7%	1.8%	752	1,488	-49.5%	1.3%
Regional (International)	-	-	0.0%	0.0%	-	-	0.0%	0.0%
Regional (LAX)	1,714	2,139	-19.9%	11.6%	7,197	7,996	-10.0%	12.2%
All Cargo	524	588	-10.9%	3.5%	2,254	2,228	1.2%	3.8%
Other Operations (AC, AT, GA, MIL)	1,417	1,579	-10.3%	9.5%	5,773	6,226	-7.3%	9.8%
Total	14,839	15,768	-5.9%	100.0%	59,179	60,971	-2.9%	100.0%
<u>Operations by Terminal Area</u>								
Commuter Terminal	1,714	2,139	-19.9%	13.3%	7,197	7,996	-10.0%	14.1%
Terminal 1 East	5,318	5,486	-3.1%	41.2%	21,136	21,348	-1.0%	41.3%
Terminal 1 West	1,866	1,961	-4.8%	14.5%	7,451	7,558	-1.4%	14.6%
Terminal 2 (FIS)	49	90	-45.6%	0.4%	230	330	-30.3%	0.4%
Terminal 2 East	1,712	1,505	13.8%	13.3%	6,695	5,874	14.0%	13.1%
Terminal 2 West	2,239	2,420	-7.5%	17.4%	8,443	9,411	-10.3%	16.5%
Total	12,898	13,601	-5.2%	100.0%	51,152	52,517	-2.6%	100.0%
<u>Gate Utilization Rate (Operations)</u>								
Commuter Terminal	7.1	8.9	-19.9%		7.5	8.3	-10.0%	
Terminal 1 East	8.1	8.3	-3.1%		8.0	8.1	-1.0%	
Terminal 1 West	3.9	4.1	-4.8%		3.9	3.9	-1.4%	
Terminal 2 (FIS)	0.3	0.5	-45.6%		0.3	0.5	-30.3%	
Terminal 2 East	2.9	2.5	13.8%		2.8	2.4	14.0%	
Terminal 2 West	4.1	4.5	-7.5%		3.9	4.4	-10.3%	
Net Gate Utilization Rate	4.8	5.0	-5.2%		4.7	4.9	-2.6%	
<u>Passenger Operations Schedule Reliability</u>								
Scheduled Passenger Operations	13,013	13,635	-4.6%		51,693	53,169	-2.8%	
Actual Passenger Operations	12,898	13,601	-5.2%		51,152	52,517	-2.6%	
Net Schedule Reliability	99.1%	99.8%	-0.6%		99.0%	98.8%	0.2%	
* As reported by the Carriers and the FAA.								

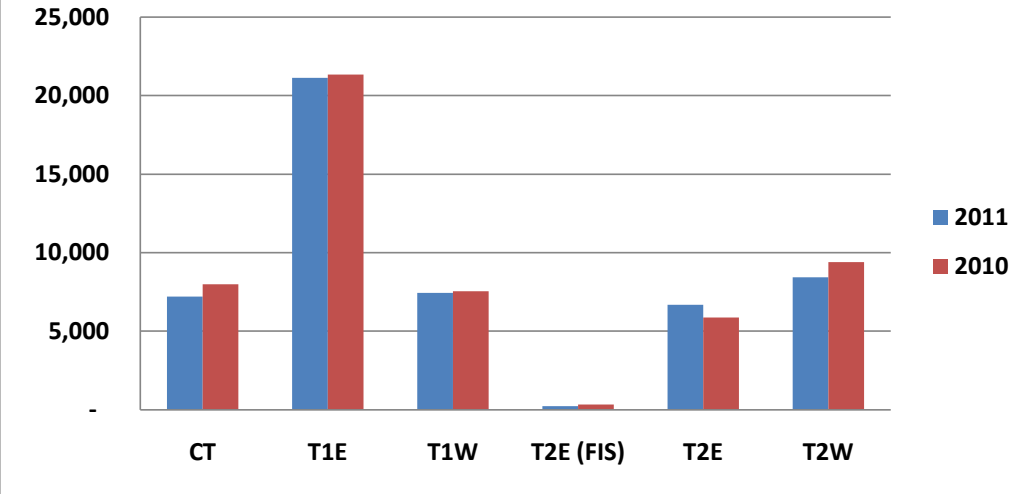
Monthly Operations Trend - 2007 through 2011



Operations by Type (2009 v 2010)



Operations by Terminal Area (2009 v 2010)



Terms and Definitions

Air Carrier (AC)	An aircraft with seating capacity of more than 60 seats or a maximum payload capacity of more than 18,000 pounds carrying passengers or cargo for hire or compensation. This includes US and foreign flagged carriers.	General Aviation (GA)	Takeoffs and landings of all civil aircraft, except those classified as air carriers, air taxis or military.
Air Taxi (AT)	An aircraft with a maximum seating capacity of 60 seats or less or a maximum payload capacity of 18,000 pounds or less carrying passengers or cargo for hire or compensation.	Itinerant Operation	Itinerant operations are operations performed by an aircraft, either IFR, SVFR, or VFR, that lands at an airport, arriving from outside the airport area, or departs an airport and leaves the airport area.
All Cargo	Air Carrier and Air Taxi Operations devoted specifically to the carriage of air cargo.	Mainline	Operations by Major, National and All Cargo Carriers. This includes US and foreign flagged carriers.
FAA Air Traffic Activity	The number of "Itinerant" arrivals and departures from the airport at which the airport traffic control tower is located.	Military (MIL)	All classes of military takeoffs and landings.
Gate Utilization Rate (Operations)	The average number of airline departures per gate, per day.	Regional	Operations conducted by the contracted partners or wholly owned subsidiaries of Mainline Carriers utilizing Regional Jets and Turboprops with 20 or more seats.
Gate Utilization Rate (Passengers)	The average number of passengers per gate, per month or per year.	Schedule Reliability	The number of Scheduled Passenger flights completed versus the number of flights scheduled expressed a percentage.