

San Diego International Airport

Lindbergh Field

Air Traffic Report

August

2011



Air Service Development Department
San Diego County Regional Airport Authority
Post Office Box 82776
San Diego, CA 92138-2776
(619) 400-2875

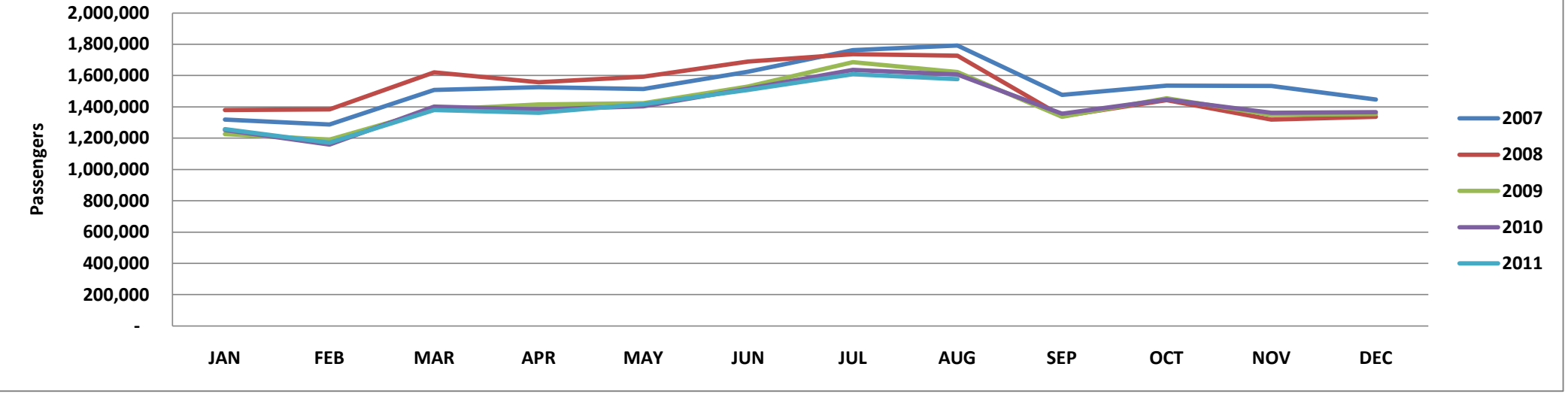
Summary Data

	August				Calendar Year-to-Date			
	2011	2010	Change	% Change	2011	2010	Change	% Change
<u>Domestic Passengers</u>								
Enplaned Passengers	770,377	799,288	(28,911)	-3.6%	5,518,459	5,599,934	(81,475)	-1.5%
Deplaned Passengers	<u>757,192</u>	<u>784,176</u>	<u>(26,984)</u>	<u>-3.4%</u>	<u>5,527,529</u>	<u>5,598,723</u>	<u>(71,194)</u>	<u>-1.3%</u>
Total	1,527,569	1,583,464	(55,895)	-3.5%	11,045,988	11,198,657	(152,669)	-1.4%
<u>International Passengers</u>								
Enplaned Passengers	24,551	11,188	13,363	119.4%	111,922	78,288	33,634	43.0%
Deplaned Passengers	<u>25,678</u>	<u>11,138</u>	<u>14,540</u>	<u>130.5%</u>	<u>122,886</u>	<u>80,715</u>	<u>42,171</u>	<u>52.2%</u>
Total	50,229	22,326	27,903	125.0%	234,808	159,003	75,805	47.7%
<u>Total Passengers</u>								
Enplaned Passengers	794,928	810,476	(15,548)	-1.9%	5,630,381	5,678,222	(47,841)	-0.8%
Deplaned Passengers	<u>782,870</u>	<u>795,314</u>	<u>(12,444)</u>	<u>-1.6%</u>	<u>5,650,415</u>	<u>5,679,438</u>	<u>(29,023)</u>	<u>-0.5%</u>
Total	1,577,798	1,605,790	(27,992)	-1.7%	11,280,796	11,357,660	(76,864)	-0.7%
<u>Domestic Air Cargo Tons</u>								
Enplaned Cargo Tons	4,890.1	4,534.6	355.5	7.8%	37,399.0	36,261.5	1,137.5	3.1%
Deplaned Cargo Tons	<u>4,675.2</u>	<u>4,672.5</u>	<u>2.7</u>	<u>0.1%</u>	<u>36,990.9</u>	<u>37,067.0</u>	<u>(76.0)</u>	<u>-0.2%</u>
Total	9,565.3	9,207.0	358.3	3.9%	74,389.9	73,328.5	1,061.4	1.4%
<u>International Cargo Tons</u>								
Enplaned Cargo Tons	292.7	2.1	290.5	13640.4%	1,042.0	28.3	1,013.7	3587.0%
Deplaned Cargo Tons	<u>0.2</u>	<u>-</u>	<u>0.2</u>	<u>100.0%</u>	<u>154.4</u>	<u>1.2</u>	<u>153.2</u>	<u>12763.3%</u>
Total	292.9	2.1	290.7	13648.8%	1,196.3	29.5	1,166.9	3960.8%
<u>Total Cargo Tons</u>								
Enplaned Cargo Tons	5,182.8	4,536.7	646.1	14.2%	38,440.9	36,289.8	2,151.2	5.9%
Deplaned Cargo Tons	<u>4,675.4</u>	<u>4,672.5</u>	<u>2.9</u>	<u>0.1%</u>	<u>37,145.3</u>	<u>37,068.2</u>	<u>77.1</u>	<u>0.2%</u>
Total	9,858.1	9,209.1	649.0	7.0%	75,586.2	73,357.9	2,228.3	3.0%
<u>US Mail Tons</u>								
Enplaned US Mail Tons	1,018.3	880.5	137.8	15.7%	8,164.5	7,817.0	348	4.4%
Deplaned US Mail Tons	<u>255.5</u>	<u>206.4</u>	<u>49.2</u>	<u>23.8%</u>	<u>2,437.7</u>	<u>2,161.5</u>	<u>276</u>	<u>12.8%</u>
Total	1,273.9	1,086.9	187.0	17.2%	10,602.2	9,978.4	624	6.3%
<u>FAA Air Traffic Activity*</u>								
Air Carrier	13,196	13,295	(99)	-0.7%	97,739	99,659	(1,920)	-1.9%
Air Taxi	2,283	2,527	(244)	-9.7%	18,529	20,627	(2,098)	-10.2%
General Aviation	955	1,196	(241)	-20.2%	7,138	8,166	(1,028)	-12.6%
Military	<u>60</u>	<u>67</u>	<u>(7)</u>	<u>-10.4%</u>	<u>476</u>	<u>661</u>	<u>(185)</u>	<u>-28.0%</u>
Total	16,494	17,085	(591)	-3.5%	123,882	129,113	(5,231)	-4.1%
* FAA Aircraft Activity includes "Itinerant Operations" at the airport and will differ from other operational data reported by the airlines. Source: http://aspm.faa.gov/opsnet/sys/Airport.asp								

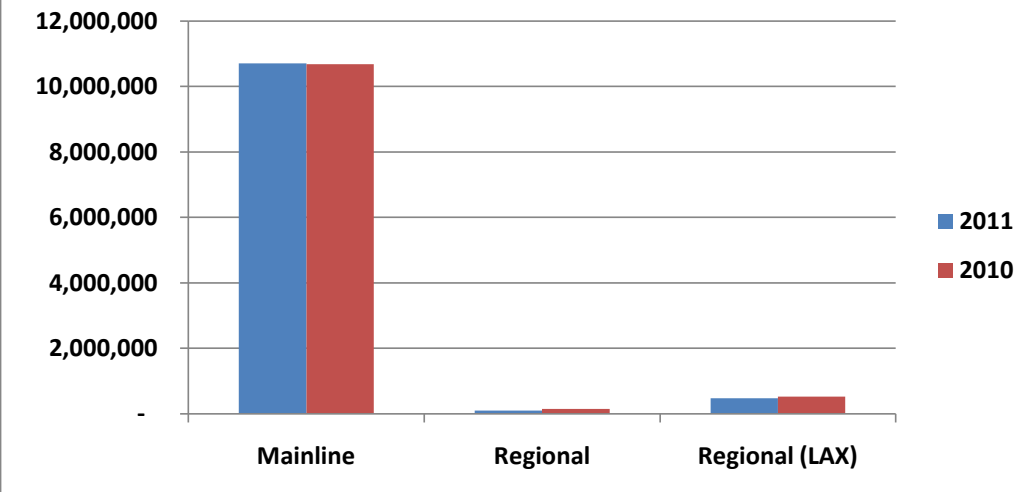
Detailed Passenger Summary

	August				Calendar Year-to-Date			
	2011	2010	% Change	% Share	2011	2010	% Change	% Share
<u>Passengers by Type of Carrier*</u>								
Mainline	1,457,607	1,511,820	-3.6%	92.4%	10,530,186	10,570,233	-0.4%	93.3%
Mainline (International)	42,891	15,397	178.6%	2.7%	173,605	116,119	49.5%	1.5%
Regional	13,657	8,945	52.7%	0.9%	97,959	146,451	-33.1%	0.9%
Regional (International)	-	-	0.0%	0.0%	-	-	0.0%	0.0%
Regional (LAX)	63,643	69,628	-8.6%	4.0%	479,046	524,857	-8.7%	4.2%
Total	1,577,798	1,605,790	-1.7%	100.0%	11,280,796	11,357,660	-0.7%	100.0%
<u>Passengers by Terminal Area</u>								
Commuter Terminal	63,643	69,628	-8.6%	4.0%	479,046	524,857	-8.7%	4.2%
Terminal 1 East	585,052	586,665	-0.3%	37.1%	4,378,129	4,313,165	1.5%	38.8%
Terminal 1 West	252,207	263,239	-4.2%	16.0%	1,842,678	1,902,924	-3.2%	16.3%
Terminal 2 (FIS)	17,490	3,653	378.8%	1.1%	64,740	42,675	51.7%	0.6%
Terminal 2 East	275,059	258,938	6.2%	17.4%	1,839,058	1,682,060	9.3%	16.3%
Terminal 2 West	384,347	423,667	-9.3%	24.4%	2,677,145	2,891,979	-7.4%	23.7%
Total	1,577,798	1,605,790	-1.7%	100.0%	11,280,796	11,357,660	-0.7%	100.0%
<u>Gate Utilization Rate (Passengers)</u>								
Commuter Terminal	15,911	17,407	-8.6%		119,762	131,214	-8.7%	
Terminal 1 East	53,187	53,333	-0.3%		398,012	392,106	1.5%	
Terminal 1 West	31,526	32,905	-4.2%		230,335	237,866	-3.2%	
Terminal 2 (FIS)	5,830	1,218	378.8%		21,580	14,225	51.7%	
Terminal 2 East	27,506	25,894	6.2%		183,906	168,206	9.3%	
Terminal 2 West	42,705	47,074	-9.3%		297,461	321,331	-7.4%	
Net Gate Utilization Rate	35,062	35,684	-1.7%		250,684	252,392	-0.7%	
<u>Passengers versus Capacity</u>								
Passengers per Departure	111.8	110.8	0.8%		105.3	102.7	2.5%	
Estimated Seats per Departure**	133.0	131.3	1.2%		131.2	129.4	1.4%	
Estimated Load Factor	84.0%	84.4%	-0.4%		80.3%	79.4%	1.1%	
* As reported by the Carriers.								
** Source: APGDat - Airline Planning Data.								

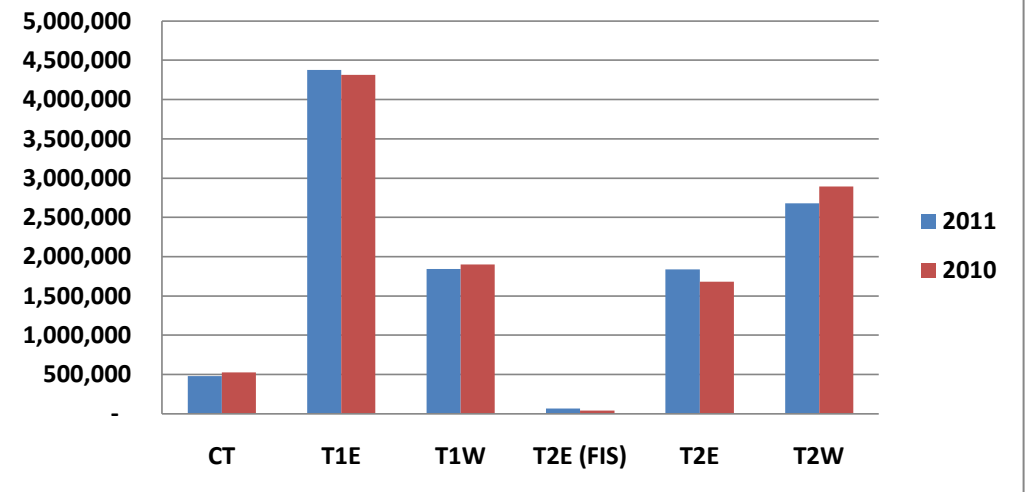
Monthly Passenger Trend - 2007 through 2011



Passengers by Type of Carrier (2009 v 2010)



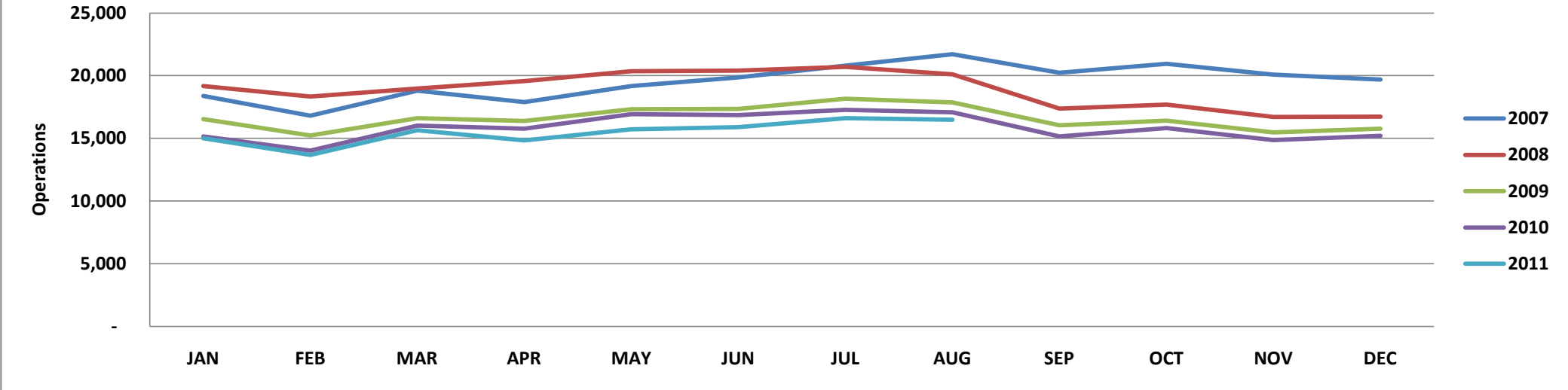
Passengers by Terminal Area (2009 v 2010)



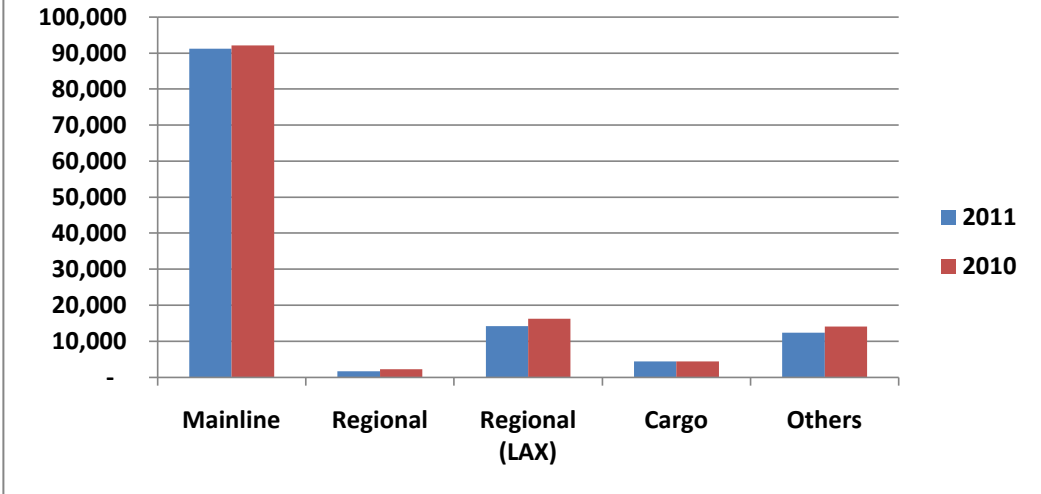
Detailed Operations Summary

	August				Calendar Year-to-Date			
	2011	2010	% Change	% Share	2011	2010	Change	% Share
<u>Operations by Type of Carrier*</u>								
Mainline	11,834	12,206	-3.0%	71.7%	89,677	90,762	-1.2%	72.4%
Mainline (International)	292	160	82.5%	1.8%	1,548	1,341	15.4%	1.2%
Regional	226	142	59.2%	1.4%	1,650	2,246	-26.5%	1.3%
Regional (International)	-	-	0.0%	0.0%	-	-	0.0%	0.0%
Regional (LAX)	1,765	1,980	-10.9%	10.7%	14,233	16,234	-12.3%	11.5%
All Cargo	542	572	-5.2%	3.3%	4,424	4,446	-0.5%	3.6%
Other Operations (AC, AT, GA, MIL)	1,835	2,025	-9.4%	11.1%	12,350	14,084	-12.3%	10.0%
Total	16,494	17,085	-3.5%	100.0%	123,882	129,113	-4.1%	100.0%
<u>Operations by Terminal Area</u>								
Commuter Terminal	1,765	1,980	-10.9%	12.5%	14,233	16,234	-12.3%	13.3%
Terminal 1 East	5,638	5,710	-1.3%	39.9%	43,606	44,262	-1.5%	40.7%
Terminal 1 West	1,972	1,929	2.2%	14.0%	15,252	15,211	0.3%	14.2%
Terminal 2 (FIS)	97	31	212.9%	0.7%	538	472	14.0%	0.5%
Terminal 2 East	2,058	1,892	8.8%	14.6%	14,589	13,146	11.0%	13.6%
Terminal 2 West	2,587	2,946	-12.2%	18.3%	18,890	21,258	-11.1%	17.6%
Total	14,117	14,488	-2.6%	100.0%	107,108	110,583	-3.1%	100.0%
<u>Gate Utilization Rate (Operations)</u>								
Commuter Terminal	7.1	8.0	-10.9%		7.3	8.4	-12.3%	
Terminal 1 East	8.3	8.4	-1.3%		8.2	8.3	-1.5%	
Terminal 1 West	4.0	3.9	2.2%		3.9	3.9	0.3%	
Terminal 2 (FIS)	0.5	0.2	212.9%		0.4	0.3	14.0%	
Terminal 2 East	3.3	3.1	8.8%		3.0	2.7	11.0%	
Terminal 2 West	4.6	5.3	-12.2%		4.3	4.9	-11.1%	
Net Gate Utilization Rate	5.1	5.2	-2.6%		4.9	5.1	-3.1%	
<u>Passenger Operations Schedule Reliability</u>								
Scheduled Passenger Operations	14,329	14,570	-1.7%		108,109	111,559	-3.1%	
Actual Passenger Operations	14,117	14,488	-2.6%		107,108	110,583	-3.1%	
Net Schedule Reliability	98.5%	99.4%	-0.9%		99.1%	99.1%	-0.1%	
* As reported by the Carriers and the FAA.								

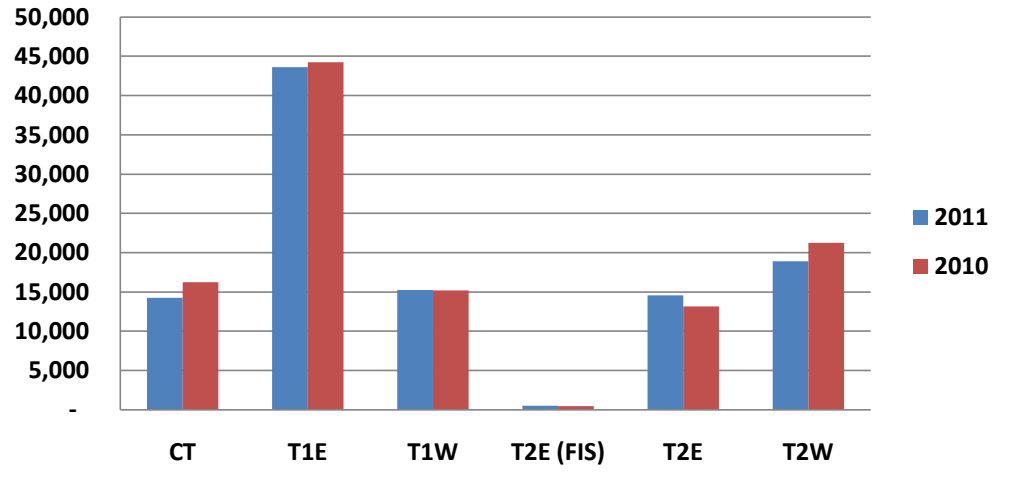
Monthly Operations Trend - 2007 through 2011



Operations by Type (2009 v 2010)



Operations by Terminal Area (2009 v 2010)



Terms and Definitions

Air Carrier (AC)	An aircraft with seating capacity of more than 60 seats or a maximum payload capacity of more than 18,000 pounds carrying passengers or cargo for hire or compensation. This includes US and foreign flagged carriers.	General Aviation (GA)	Takeoffs and landings of all civil aircraft, except those classified as air carriers, air taxis or military.
Air Taxi (AT)	An aircraft with a maximum seating capacity of 60 seats or less or a maximum payload capacity of 18,000 pounds or less carrying passengers or cargo for hire or compensation.	Itinerant Operation	Itinerant operations are operations performed by an aircraft, either IFR, SVFR, or VFR, that lands at an airport, arriving from outside the airport area, or departs an airport and leaves the airport area.
All Cargo	Air Carrier and Air Taxi Operations devoted specifically to the carriage of air cargo.	Mainline	Operations by Major, National and All Cargo Carriers. This includes US and foreign flagged carriers.
FAA Air Traffic Activity	The number of "Itinerant" arrivals and departures from the airport at which the airport traffic control tower is located.	Military (MIL)	All classes of military takeoffs and landings.
Gate Utilization Rate (Operations)	The average number of airline departures per gate, per day.	Regional	Operations conducted by the contracted partners or wholly owned subsidiaries of Mainline Carriers utilizing Regional Jets and Turboprops with 20 or more seats.
Gate Utilization Rate (Passengers)	The average number of passengers per gate, per month or per year.	Schedule Reliability	The number of Scheduled Passenger flights completed versus the number of flights scheduled expressed a percentage.