

San Diego International Airport

Lindbergh Field

Air Traffic Report

January

2011



Air Service Development Department
San Diego County Regional Airport Authority
Post Office Box 82776
San Diego, CA 92138-2776
(619) 400-2875

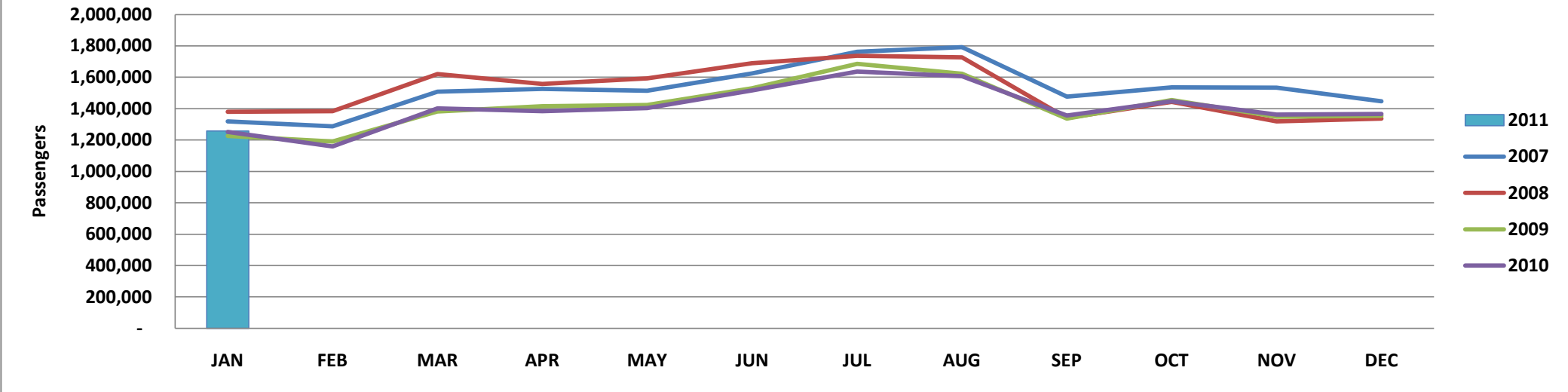
Summary Data

	January				Calendar Year-to-Date			
	2011	2010	Change	% Change	2011	2010	Change	% Change
<u>Domestic Passengers</u>								
Enplaned Passengers	606,375	609,059	(2,684)	-0.4%	606,375	609,059	(2,684)	-0.4%
Deplaned Passengers	<u>629,617</u>	<u>622,562</u>	<u>7,055</u>	<u>1.1%</u>	<u>629,617</u>	<u>622,562</u>	<u>7,055</u>	<u>1.1%</u>
Total	1,235,992	1,231,621	4,371	0.4%	1,235,992	1,231,621	4,371	0.4%
<u>International Passengers</u>								
Enplaned Passengers	9,146	8,977	169	1.9%	9,146	8,977	169	1.9%
Deplaned Passengers	<u>11,830</u>	<u>10,200</u>	<u>1,630</u>	<u>16.0%</u>	<u>11,830</u>	<u>10,200</u>	<u>1,630</u>	<u>16.0%</u>
Total	20,976	19,177	1,799	9.4%	20,976	19,177	1,799	9.4%
<u>Total Passengers</u>								
Enplaned Passengers	615,521	618,036	(2,515)	-0.4%	615,521	618,036	(2,515)	-0.4%
Deplaned Passengers	<u>641,447</u>	<u>632,762</u>	<u>8,685</u>	<u>1.4%</u>	<u>641,447</u>	<u>632,762</u>	<u>8,685</u>	<u>1.4%</u>
Total	1,256,968	1,250,798	6,170	0.5%	1,256,968	1,250,798	6,170	0.5%
<u>Domestic Air Cargo Tons</u>								
Enplaned Cargo Tons	4,263.0	4,237.6	25.4	0.6%	4,263.0	4,237.6	25.4	0.6%
Deplaned Cargo Tons	<u>4,487.7</u>	<u>4,205.1</u>	<u>282.6</u>	<u>6.7%</u>	<u>4,487.7</u>	<u>4,205.1</u>	<u>282.6</u>	<u>6.7%</u>
Total	8,750.7	8,442.7	308.0	3.6%	8,750.7	8,442.7	308.0	3.6%
<u>International Cargo Tons</u>								
Enplaned Cargo Tons	9.5	4.0	5.5	138.3%	9.5	4.0	5.5	138.3%
Deplaned Cargo Tons	<u>1.9</u>	<u>1.2</u>	<u>0.7</u>	<u>54.2%</u>	<u>1.9</u>	<u>1.2</u>	<u>0.7</u>	<u>54.2%</u>
Total	11.4	5.2	6.2	118.8%	11.4	5.2	6.2	118.8%
<u>Total Cargo Tons</u>								
Enplaned Cargo Tons	4,272.5	4,241.6	30.9	0.7%	4,272.5	4,241.6	30.9	0.7%
Deplaned Cargo Tons	<u>4,489.6</u>	<u>4,206.3</u>	<u>283.3</u>	<u>6.7%</u>	<u>4,489.6</u>	<u>4,206.3</u>	<u>283.3</u>	<u>6.7%</u>
Total	8,762.0	8,447.9	314.2	3.7%	8,762.0	8,447.9	314.2	3.7%
<u>US Mail Tons</u>								
Enplaned US Mail Tons	1,058.9	1,106.9	(48.0)	-4.3%	1,058.9	1,106.9	(48)	-4.3%
Deplaned US Mail Tons	<u>363.1</u>	<u>320.8</u>	<u>42.3</u>	<u>13.2%</u>	<u>363.1</u>	<u>320.8</u>	<u>42</u>	<u>13.2%</u>
Total	1,422.0	1,427.7	(5.7)	-0.4%	1,422.0	1,427.7	(6)	-0.4%
<u>FAA Air Traffic Activity*</u>								
Air Carrier	11,777	11,824	(47)	-0.4%	11,777	11,824	(47)	-0.4%
Air Taxi	2,314	2,380	(66)	-2.8%	2,314	2,380	(66)	-2.8%
General Aviation	876	861	15	1.7%	876	861	15	1.7%
Military	<u>51</u>	<u>84</u>	<u>(33)</u>	<u>-39.3%</u>	<u>51</u>	<u>84</u>	<u>(33)</u>	<u>-39.3%</u>
Total	15,018	15,149	(131)	-0.9%	15,018	15,149	(131)	-0.9%
* FAA Aircraft Activity includes "Itinerant Operations" at the airport and will differ from other operational data reported by the airlines. Source: http://aspm.faa.gov/opsnet/sys/Airport.asp								

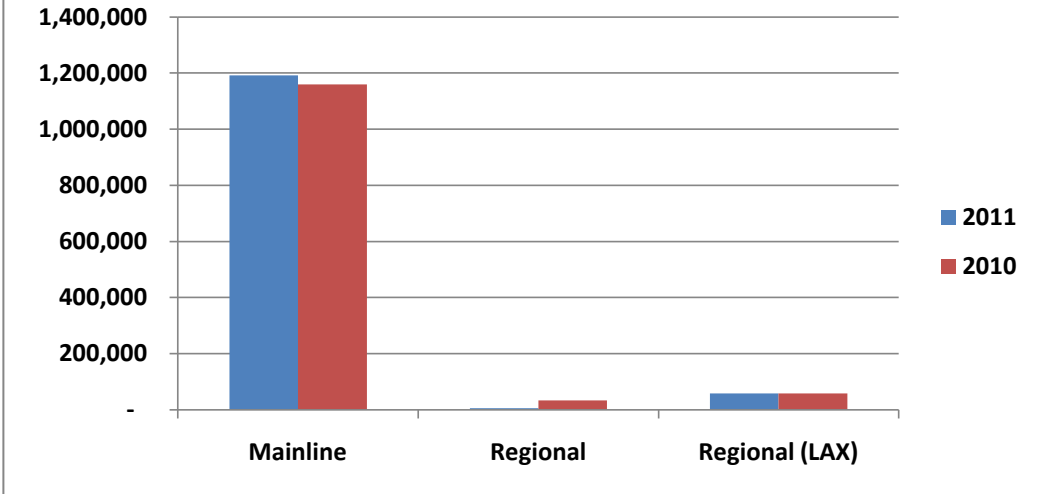
Detailed Passenger Summary

	January				Calendar Year-to-Date			
	2011	2010	% Change	% Share	2011	2010	% Change	% Share
<u>Passengers by Type of Carrier*</u>								
Mainline	1,179,726	1,144,200	3.1%	93.9%	1,179,726	1,144,200	3.1%	93.9%
Mainline (International)	12,524	15,015	-16.6%	1.0%	12,524	15,015	-16.6%	1.0%
Regional	6,147	33,640	-81.7%	0.5%	6,147	33,640	-81.7%	0.5%
Regional (International)	-	-	0.0%	0.0%	-	-	0.0%	0.0%
Regional (LAX)	58,571	57,943	1.1%	4.7%	58,571	57,943	1.1%	4.7%
Total	1,256,968	1,250,798	0.5%	100.0%	1,256,968	1,250,798	0.5%	100.0%
<u>Passengers by Terminal Area</u>								
Commuter Terminal	58,571	57,943	1.1%	4.7%	58,571	57,943	1.1%	4.7%
Terminal 1 East	505,764	480,682	5.2%	40.2%	505,764	480,682	5.2%	40.2%
Terminal 1 West	219,220	223,684	-2.0%	17.4%	219,220	223,684	-2.0%	17.4%
Terminal 2 (FIS)	4,754	5,843	-18.6%	0.4%	4,754	5,843	-18.6%	0.4%
Terminal 2 East	195,678	178,081	9.9%	15.6%	195,678	178,081	9.9%	15.6%
Terminal 2 West	272,981	304,565	-10.4%	21.7%	272,981	304,565	-10.4%	21.7%
Total	1,256,968	1,250,798	0.5%	100.0%	1,256,968	1,250,798	0.5%	100.0%
<u>Gate Utilization Rate (Passengers)</u>								
Commuter Terminal	14,643	14,486	1.1%		14,643	14,486	1.1%	
Terminal 1 East	45,979	43,698	5.2%		45,979	43,698	5.2%	
Terminal 1 West	27,403	27,961	-2.0%		27,403	27,961	-2.0%	
Terminal 2 (FIS)	1,585	1,948	-18.6%		1,585	1,948	-18.6%	
Terminal 2 East	19,568	17,808	9.9%		19,568	17,808	9.9%	
Terminal 2 West	30,331	33,841	-10.4%		30,331	33,841	-10.4%	
Net Gate Utilization Rate	27,933	27,796	0.5%		27,933	27,796	0.5%	
<u>Passengers versus Capacity</u>								
Passengers per Departure	97.1	95.9	1.3%		97.1	95.9	1.3%	
Estimated Seats per Departure**	130.2	128.8	1.1%		130.2	128.8	1.1%	
Estimated Load Factor	74.6%	74.5%	0.2%		74.6%	74.5%	0.2%	
* As reported by the Carriers.								
** Source: APGDat - Airline Planning Data.								

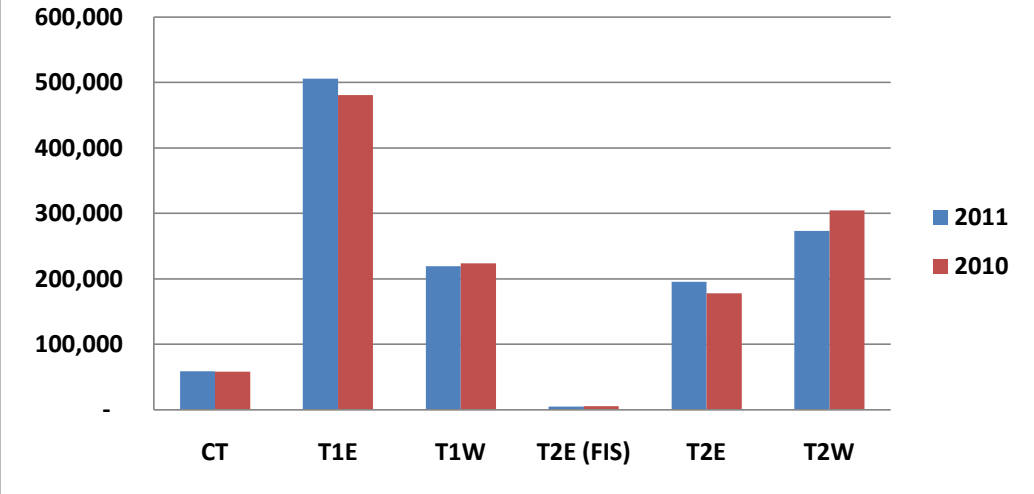
Monthly Passenger Trend - 2007 through 2011



Passengers by Type of Carrier (2009 v 2010)

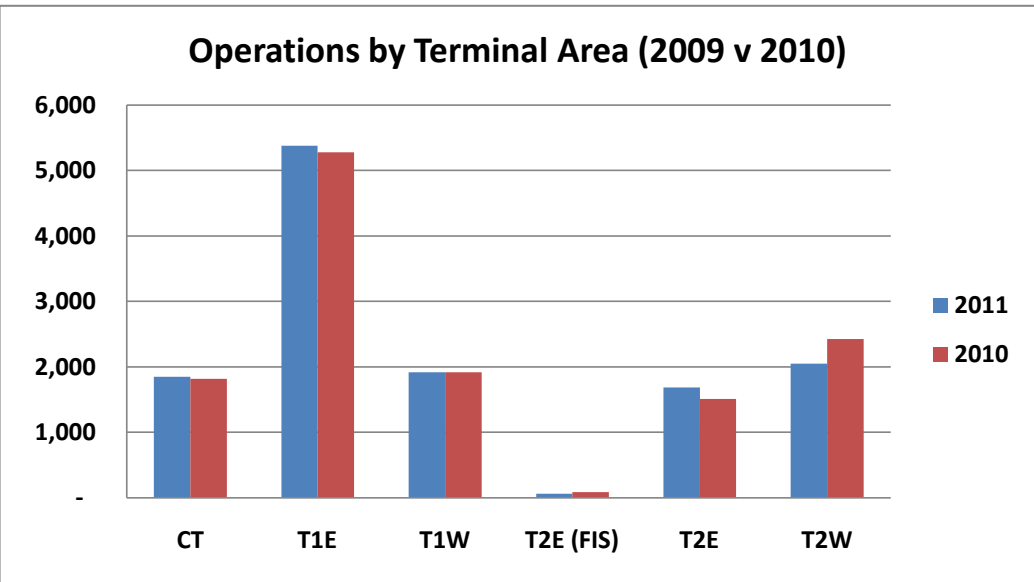
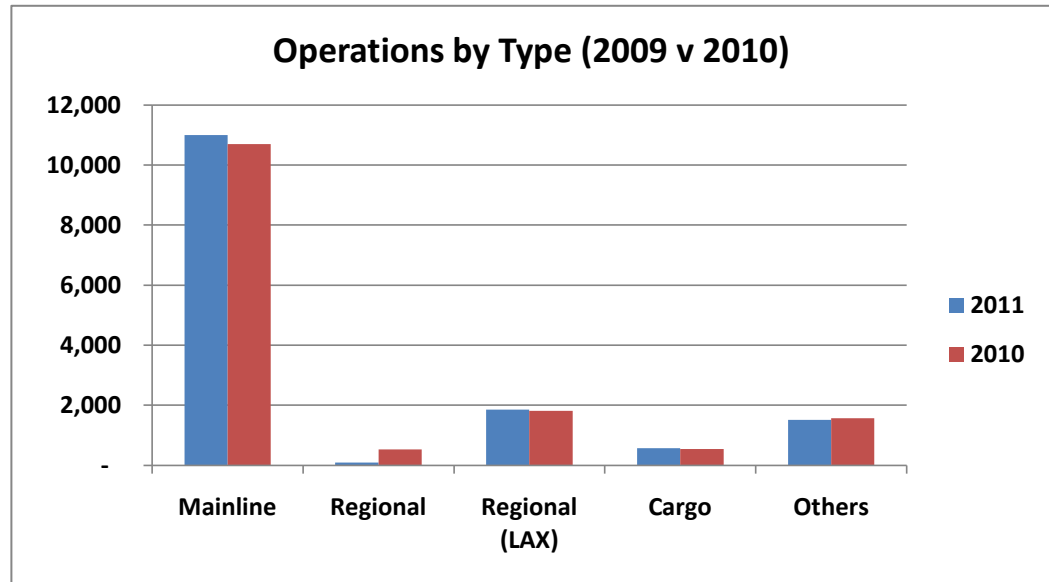
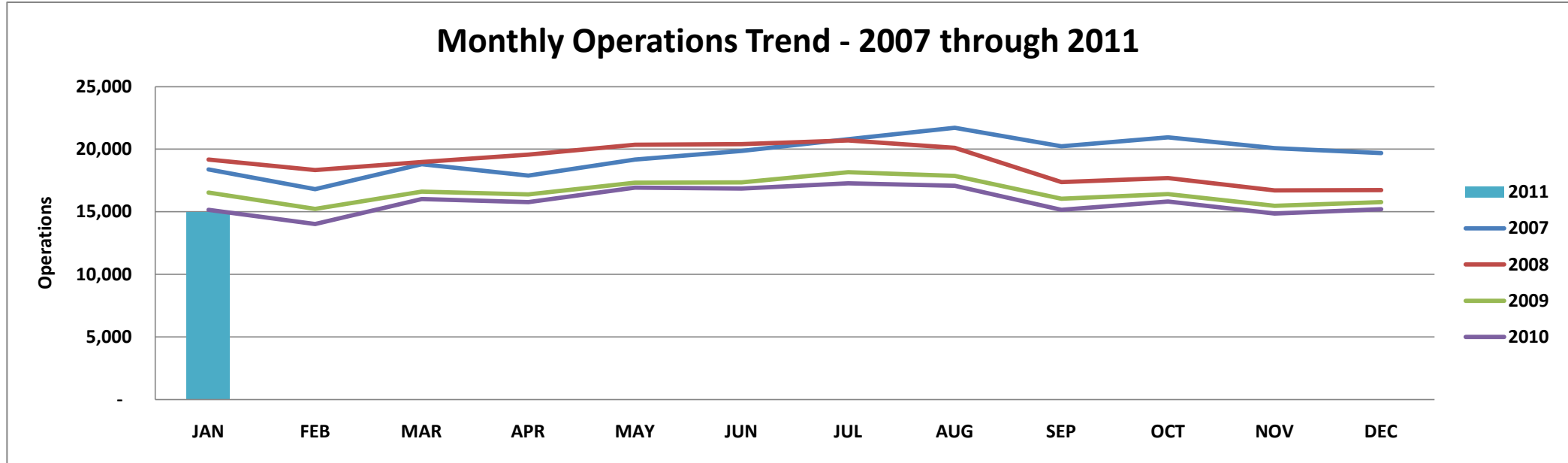


Passengers by Terminal Area (2009 v 2010)



Detailed Operations Summary

	January				Calendar Year-to-Date			
	2011	2010	% Change	% Share	2011	2010	Change	% Share
<u>Operations by Type of Carrier*</u>								
Mainline	10,853	10,488	3.5%	72.3%	10,853	10,488	3.5%	72.3%
Mainline (International)	144	208	-30.8%	1.0%	144	208	-30.8%	1.0%
Regional	94	526	-82.1%	0.6%	94	526	-82.1%	0.6%
Regional (International)	-	-	0.0%	0.0%	-	-	0.0%	0.0%
Regional (LAX)	1,849	1,816	1.8%	12.3%	1,849	1,816	1.8%	12.3%
All Cargo	566	542	4.4%	3.8%	566	542	4.4%	3.8%
Other Operations (AC, AT, GA, MIL)	1,512	1,569	-3.6%	10.1%	1,512	1,569	-3.6%	10.1%
Total	<u>15,018</u>	<u>15,149</u>	-0.9%	100.0%	<u>15,018</u>	<u>15,149</u>	-0.9%	100.0%
<u>Operations by Terminal Area</u>								
Commuter Terminal	1,849	1,816	1.8%	14.3%	1,849	1,816	1.8%	14.3%
Terminal 1 East	5,378	5,278	1.9%	41.6%	5,378	5,278	1.9%	41.6%
Terminal 1 West	1,917	1,917	0.0%	14.8%	1,917	1,917	0.0%	14.8%
Terminal 2 (FIS)	62	89	-30.3%	0.5%	62	89	-30.3%	0.5%
Terminal 2 East	1,688	1,510	11.8%	13.0%	1,688	1,510	11.8%	13.0%
Terminal 2 West	2,046	2,428	-15.7%	15.8%	2,046	2,428	-15.7%	15.8%
Total	<u>12,940</u>	<u>13,038</u>	-0.8%	100.0%	<u>12,940</u>	<u>13,038</u>	-0.8%	100.0%
<u>Gate Utilization Rate (Operations)</u>								
Commuter Terminal	7.5	7.3	1.8%		7.5	7.3	1.8%	
Terminal 1 East	7.9	7.7	1.9%		7.9	7.7	1.9%	
Terminal 1 West	3.9	3.9	0.0%		3.9	3.9	0.0%	
Terminal 2 (FIS)	0.3	0.5	-30.3%		0.3	0.5	-30.3%	
Terminal 2 East	2.7	2.4	11.8%		2.7	2.4	11.8%	
Terminal 2 West	3.7	4.4	-15.7%		3.7	4.4	-15.7%	
Net Gate Utilization Rate	<u>4.6</u>	<u>4.7</u>	-0.8%		<u>4.6</u>	<u>4.7</u>	-0.8%	
<u>Passenger Operations Schedule Reliability</u>								
Scheduled Passenger Operations	13,112	13,352	-1.8%		13,112	13,352	-1.8%	
Actual Passenger Operations	<u>12,940</u>	<u>13,038</u>	-0.8%		<u>12,940</u>	<u>13,038</u>	-0.8%	
Net Schedule Reliability	98.7%	97.6%	1.1%		98.7%	97.6%	1.1%	
* As reported by the Carriers and the FAA.								



Terms and Definitions

Air Carrier (AC)	An aircraft with seating capacity of more than 60 seats or a maximum payload capacity of more than 18,000 pounds carrying passengers or cargo for hire or compensation. This includes US and foreign flagged carriers.	General Aviation (GA)	Takeoffs and landings of all civil aircraft, except those classified as air carriers, air taxis or military.
Air Taxi (AT)	An aircraft with a maximum seating capacity of 60 seats or less or a maximum payload capacity of 18,000 pounds or less carrying passengers or cargo for hire or compensation.	Itinerant Operation	Itinerant operations are operations performed by an aircraft, either IFR, SVFR, or VFR, that lands at an airport, arriving from outside the airport area, or departs an airport and leaves the airport area.
All Cargo	Air Carrier and Air Taxi Operations devoted specifically to the carriage of air cargo.	Mainline	Operations by Major, National and All Cargo Carriers. This includes US and foreign flagged carriers.
FAA Air Traffic Activity	The number of "Itinerant" arrivals and departures from the airport at which the airport traffic control tower is located.	Military (MIL)	All classes of military takeoffs and landings.
Gate Utilization Rate (Operations)	The average number of airline departures per gate, per day.	Regional	Operations conducted by the contracted partners or wholly owned subsidiaries of Mainline Carriers utilizing Regional Jets and Turboprops with 20 or more seats.
Gate Utilization Rate (Passengers)	The average number of passengers per gate, per month or per year.	Schedule Reliability	The number of Scheduled Passenger flights completed versus the number of flights scheduled expressed a percentage.