

San Diego International Airport

Lindbergh Field

Air Traffic Report

March

2011



Air Service Development Department
San Diego County Regional Airport Authority
Post Office Box 82776
San Diego, CA 92138-2776
(619) 400-2875

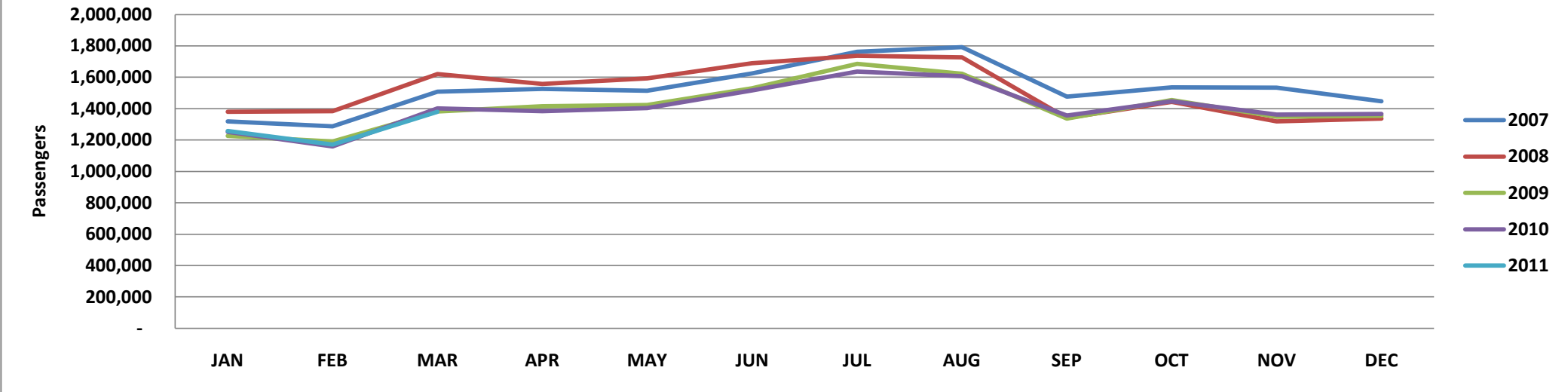
Summary Data

	March				Calendar Year-to-Date			
	2011	2010	Change	% Change	2011	2010	Change	% Change
<u>Domestic Passengers</u>								
Enplaned Passengers	677,666	689,693	(12,027)	-1.7%	1,856,390	1,866,816	(10,426)	-0.6%
Deplaned Passengers	<u>679,960</u>	<u>689,966</u>	<u>(10,006)</u>	<u>-1.5%</u>	<u>1,889,286</u>	<u>1,884,935</u>	<u>4,351</u>	<u>0.2%</u>
Total	1,357,626	1,379,659	(22,033)	-1.6%	3,745,676	3,751,751	(6,075)	-0.2%
<u>International Passengers</u>								
Enplaned Passengers	10,643	11,196	(553)	-4.9%	29,016	29,386	(370)	-1.3%
Deplaned Passengers	<u>11,822</u>	<u>11,520</u>	<u>302</u>	<u>2.6%</u>	<u>33,826</u>	<u>31,091</u>	<u>2,735</u>	<u>8.8%</u>
Total	22,465	22,716	(251)	-1.1%	62,842	60,477	2,365	3.9%
<u>Total Passengers</u>								
Enplaned Passengers	688,309	700,889	(12,580)	-1.8%	1,885,406	1,896,202	(10,796)	-0.6%
Deplaned Passengers	<u>691,782</u>	<u>701,486</u>	<u>(9,704)</u>	<u>-1.4%</u>	<u>1,923,112</u>	<u>1,916,026</u>	<u>7,086</u>	<u>0.4%</u>
Total	1,380,091	1,402,375	(22,284)	-1.6%	3,808,518	3,812,228	(3,710)	-0.1%
<u>Domestic Air Cargo Tons</u>								
Enplaned Cargo Tons	5,219.4	4,782.7	436.7	9.1%	13,816.5	13,290.3	526.2	4.0%
Deplaned Cargo Tons	<u>5,226.4</u>	<u>4,727.1</u>	<u>499.3</u>	<u>10.6%</u>	<u>14,062.4</u>	<u>12,970.0</u>	<u>1,092.4</u>	<u>8.4%</u>
Total	10,445.8	9,509.8	936.0	9.8%	27,878.9	26,260.3	1,618.6	6.2%
<u>International Cargo Tons</u>								
Enplaned Cargo Tons	5.3	5.0	0.3	6.6%	17.8	13.9	3.9	28.1%
Deplaned Cargo Tons	<u>1.9</u>	<u>-</u>	<u>1.9</u>	<u>100.0%</u>	<u>4.1</u>	<u>1.2</u>	<u>2.9</u>	<u>241.7%</u>
Total	7.3	5.0	2.3	45.4%	21.9	15.1	6.8	45.1%
<u>Total Cargo Tons</u>								
Enplaned Cargo Tons	5,224.7	4,787.7	437.0	9.1%	13,834.3	13,304.2	530.1	4.0%
Deplaned Cargo Tons	<u>5,228.3</u>	<u>4,727.1</u>	<u>501.3</u>	<u>10.6%</u>	<u>14,066.5</u>	<u>12,971.2</u>	<u>1,095.3</u>	<u>8.4%</u>
Total	10,453.1	9,514.8	938.3	9.9%	27,900.8	26,275.4	1,625.4	6.2%
<u>US Mail Tons</u>								
Enplaned US Mail Tons	1,077.0	1,083.8	(6.8)	-0.6%	3,136.4	3,254.8	(118)	-3.6%
Deplaned US Mail Tons	<u>346.4</u>	<u>302.5</u>	<u>43.9</u>	<u>14.5%</u>	<u>1,026.2</u>	<u>900.7</u>	<u>125</u>	<u>13.9%</u>
Total	1,423.4	1,386.3	37.1	2.7%	4,162.6	4,155.5	7	0.2%
<u>FAA Air Traffic Activity*</u>								
Air Carrier	12,179	12,235	(56)	-0.5%	34,668	34,858	(190)	-0.5%
Air Taxi	2,461	2,701	(240)	-8.9%	6,907	7,440	(533)	-7.2%
General Aviation	929	976	(47)	-4.8%	2,576	2,620	(44)	-1.7%
Military	<u>77</u>	<u>116</u>	<u>(39)</u>	<u>-33.6%</u>	<u>189</u>	<u>285</u>	<u>(96)</u>	<u>-33.7%</u>
Total	15,646	16,028	(382)	-2.4%	44,340	45,203	(863)	-1.9%
* FAA Aircraft Activity includes "Itinerant Operations" at the airport and will differ from other operational data reported by the airlines. Source: http://aspm.faa.gov/opsnet/sys/Airport.asp								

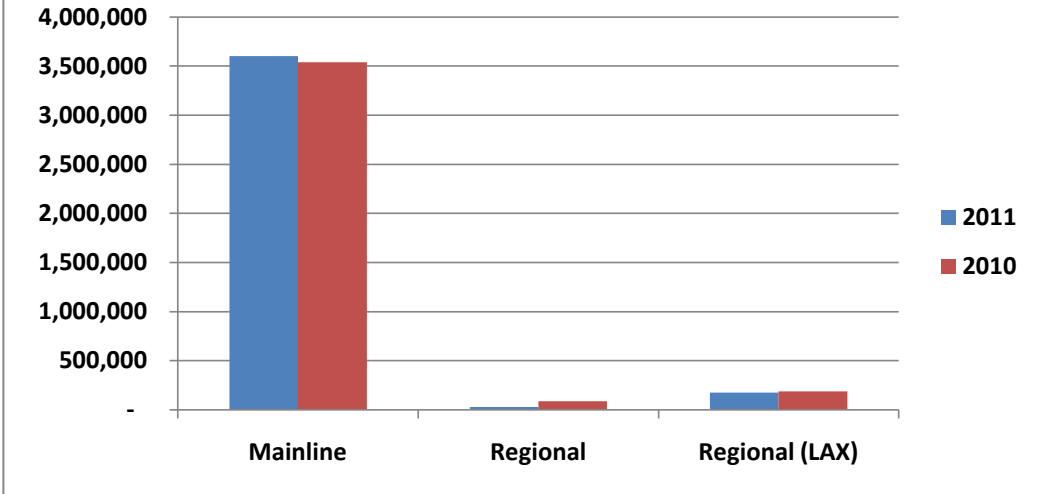
Detailed Passenger Summary

	March				Calendar Year-to-Date			
	2011	2010	% Change	% Share	2011	2010	% Change	% Share
<u>Passengers by Type of Carrier*</u>								
Mainline	1,290,207	1,286,958	0.3%	93.5%	3,564,970	3,491,419	2.1%	93.6%
Mainline (International)	13,740	18,566	-26.0%	1.0%	38,546	48,015	-19.7%	1.0%
Regional	14,087	26,857	-47.5%	1.0%	29,338	86,617	-66.1%	0.8%
Regional (International)	-	-	0.0%	0.0%	-	-	0.0%	0.0%
Regional (LAX)	62,057	69,994	-11.3%	4.5%	175,664	186,177	-5.6%	4.6%
Total	1,380,091	1,402,375	-1.6%	100.0%	3,808,518	3,812,228	-0.1%	100.0%
<u>Passengers by Terminal Area</u>								
Commuter Terminal	62,057	69,994	-11.3%	4.5%	175,664	186,177	-5.6%	4.6%
Terminal 1 East	543,456	551,408	-1.4%	39.4%	1,529,970	1,482,660	3.2%	40.2%
Terminal 1 West	231,738	244,765	-5.3%	16.8%	653,801	673,443	-2.9%	17.2%
Terminal 2 (FIS)	4,544	7,560	-39.9%	0.3%	12,799	18,614	-31.2%	0.3%
Terminal 2 East	220,067	193,467	13.7%	15.9%	598,955	532,395	12.5%	15.7%
Terminal 2 West	318,229	335,181	-5.1%	23.1%	837,329	918,939	-8.9%	22.0%
Total	1,380,091	1,402,375	-1.6%	100.0%	3,808,518	3,812,228	-0.1%	100.0%
<u>Gate Utilization Rate (Passengers)</u>								
Commuter Terminal	15,514	17,499	-11.3%		43,916	46,544	-5.6%	
Terminal 1 East	49,405	50,128	-1.4%		139,088	134,787	3.2%	
Terminal 1 West	28,967	30,596	-5.3%		81,725	84,180	-2.9%	
Terminal 2 (FIS)	1,515	2,520	-39.9%		4,266	6,205	-31.2%	
Terminal 2 East	22,007	19,347	13.7%		59,896	53,240	12.5%	
Terminal 2 West	35,359	37,242	-5.1%		93,037	102,104	-8.9%	
Net Gate Utilization Rate	30,669	31,164	-1.6%		84,634	84,716	-0.1%	
<u>Passengers versus Capacity</u>								
Passengers per Departure	102.3	101.5	0.8%		99.6	98.0	1.6%	
Estimated Seats per Departure**	129.5	127.6	1.5%		129.8	128.1	1.3%	
Estimated Load Factor	79.0%	79.5%	-0.7%		76.7%	76.5%	0.3%	
<i>* As reported by the Carriers.</i>								
<i>** Source: APGDat - Airline Planning Data.</i>								

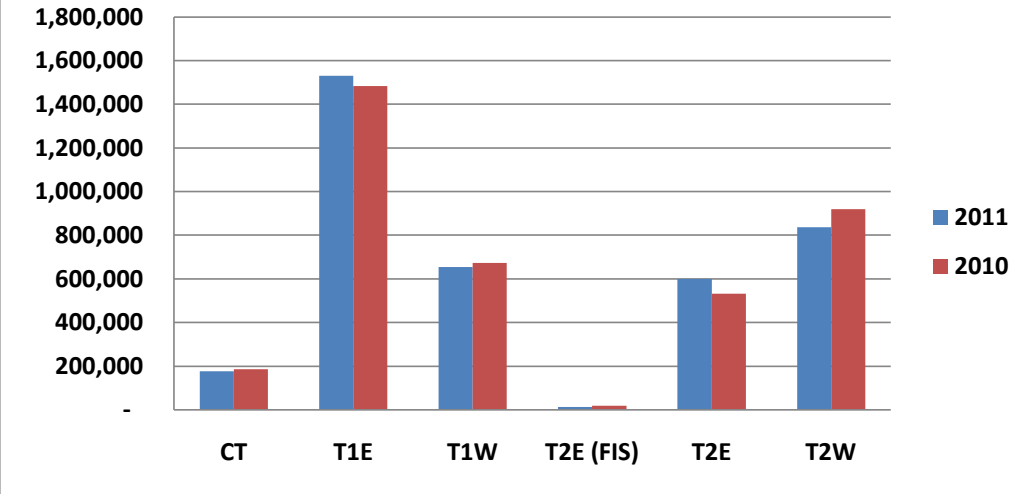
Monthly Passenger Trend - 2007 through 2011



Passengers by Type of Carrier (2009 v 2010)



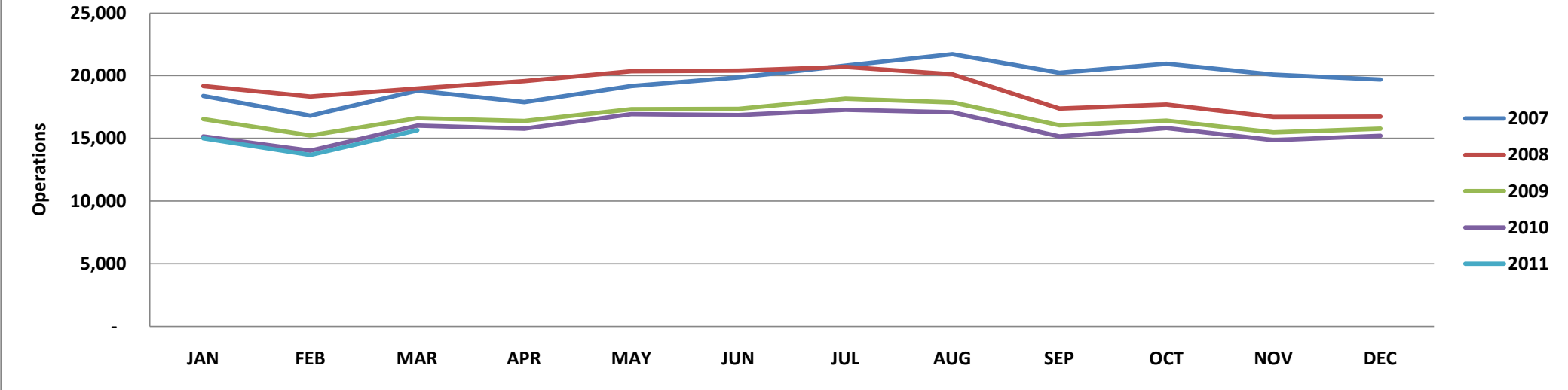
Passengers by Terminal Area (2009 v 2010)



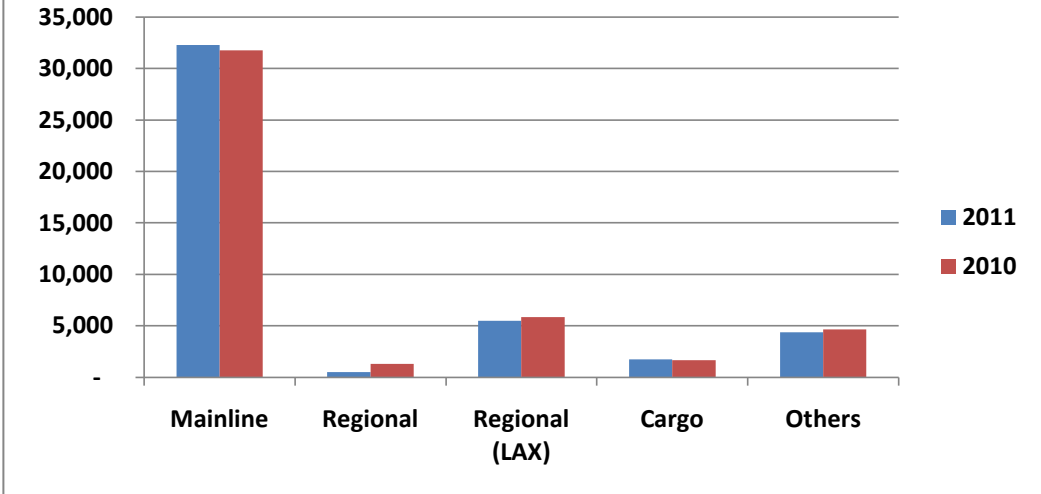
Detailed Operations Summary

	March				Calendar Year-to-Date			
	2011	2010	% Change	% Share	2011	2010	Change	% Share
<u>Operations by Type of Carrier*</u>								
Mainline	11,191	11,057	1.2%	71.5%	31,851	31,185	2.1%	71.8%
Mainline (International)	150	204	-26.5%	1.0%	430	588	-26.9%	1.0%
Regional	250	372	-32.8%	1.6%	490	1,286	-61.9%	1.1%
Regional (International)	-	-	0.0%	0.0%	-	-	0.0%	0.0%
Regional (LAX)	1,898	2,184	-13.1%	12.1%	5,483	5,857	-6.4%	12.4%
All Cargo	634	590	7.5%	4.1%	1,730	1,640	5.5%	3.9%
Other Operations (AC, AT, GA, MIL)	1,523	1,621	-6.0%	9.7%	4,356	4,647	-6.3%	9.8%
Total	15,646	16,028	-2.4%	100.0%	44,340	45,203	-1.9%	100.0%
<u>Operations by Terminal Area</u>								
Commuter Terminal	1,898	2,184	-13.1%	14.1%	5,483	5,857	-6.4%	14.3%
Terminal 1 East	5,502	5,632	-2.3%	40.8%	15,818	15,862	-0.3%	41.3%
Terminal 1 West	1,946	1,966	-1.0%	14.4%	5,585	5,597	-0.2%	14.6%
Terminal 2 (FIS)	62	83	-25.3%	0.5%	181	240	-24.6%	0.5%
Terminal 2 East	1,770	1,520	16.4%	13.1%	4,983	4,369	14.1%	13.0%
Terminal 2 West	2,311	2,432	-5.0%	17.1%	6,204	6,991	-11.3%	16.2%
Total	13,489	13,817	-2.4%	100.0%	38,254	38,916	-1.7%	100.0%
<u>Gate Utilization Rate (Operations)</u>								
Commuter Terminal	7.7	8.8	-13.1%		7.6	8.1	-6.4%	
Terminal 1 East	8.1	8.3	-2.3%		8.0	8.0	-0.3%	
Terminal 1 West	3.9	4.0	-1.0%		3.9	3.9	-0.2%	
Terminal 2 (FIS)	0.3	0.4	-25.3%		0.3	0.4	-24.6%	
Terminal 2 East	2.9	2.5	16.4%		2.8	2.4	14.1%	
Terminal 2 West	4.1	4.4	-5.0%		3.8	4.3	-11.3%	
Net Gate Utilization Rate	4.8	5.0	-2.4%		4.7	4.8	-1.7%	
<u>Passenger Operations Schedule Reliability</u>								
Scheduled Passenger Operations	13,609	13,902	-2.1%		38,680	39,534	-2.2%	
Actual Passenger Operations	13,489	13,817	-2.4%		38,254	38,916	-1.7%	
Net Schedule Reliability	99.1%	99.4%	-0.3%		98.9%	98.4%	0.5%	
* As reported by the Carriers and the FAA.								

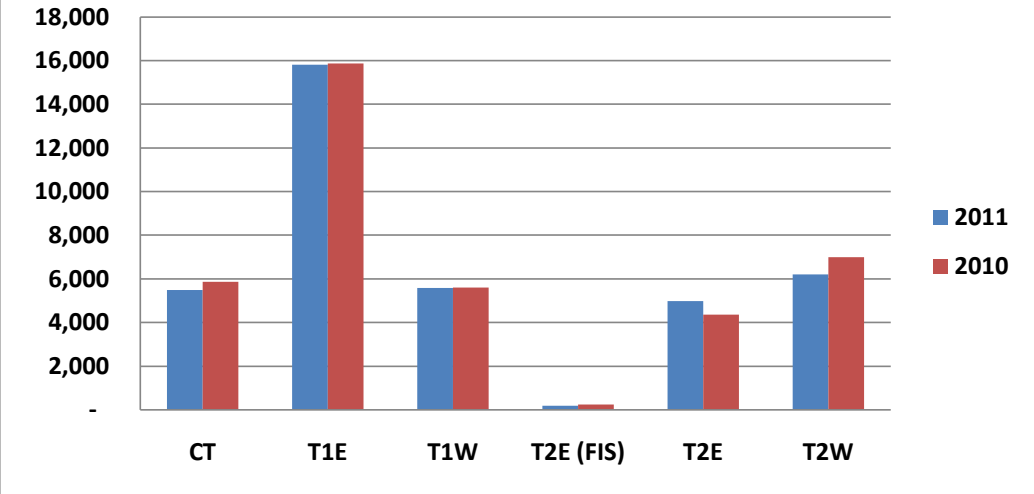
Monthly Operations Trend - 2007 through 2011



Operations by Type (2009 v 2010)



Operations by Terminal Area (2009 v 2010)



Terms and Definitions

Air Carrier (AC)	An aircraft with seating capacity of more than 60 seats or a maximum payload capacity of more than 18,000 pounds carrying passengers or cargo for hire or compensation. This includes US and foreign flagged carriers.	General Aviation (GA)	Takeoffs and landings of all civil aircraft, except those classified as air carriers, air taxis or military.
Air Taxi (AT)	An aircraft with a maximum seating capacity of 60 seats or less or a maximum payload capacity of 18,000 pounds or less carrying passengers or cargo for hire or compensation.	Itinerant Operation	Itinerant operations are operations performed by an aircraft, either IFR, SVFR, or VFR, that lands at an airport, arriving from outside the airport area, or departs an airport and leaves the airport area.
All Cargo	Air Carrier and Air Taxi Operations devoted specifically to the carriage of air cargo.	Mainline	Operations by Major, National and All Cargo Carriers. This includes US and foreign flagged carriers.
FAA Air Traffic Activity	The number of "Itinerant" arrivals and departures from the airport at which the airport traffic control tower is located.	Military (MIL)	All classes of military takeoffs and landings.
Gate Utilization Rate (Operations)	The average number of airline departures per gate, per day.	Regional	Operations conducted by the contracted partners or wholly owned subsidiaries of Mainline Carriers utilizing Regional Jets and Turboprops with 20 or more seats.
Gate Utilization Rate (Passengers)	The average number of passengers per gate, per month or per year.	Schedule Reliability	The number of Scheduled Passenger flights completed versus the number of flights scheduled expressed a percentage.